

## QCB-150 Pipe Cutting/Bevelling Machine

### Basic Information

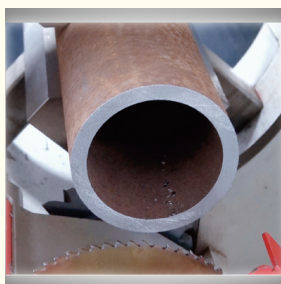
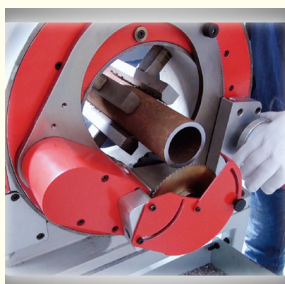


### Product Specification

- Minimum Tube Diameter: 16mm
- Maximum Calibre: 168mm
- Minimum Thickness: 0.5mm
- Maximum Thickness (recommended): 12(10)mm
- Minimum Calibre: 16mm
- Highlight: **QCB-150 Pipe Cutting Machine, QCB-150 Pipe Bevelling Machine**



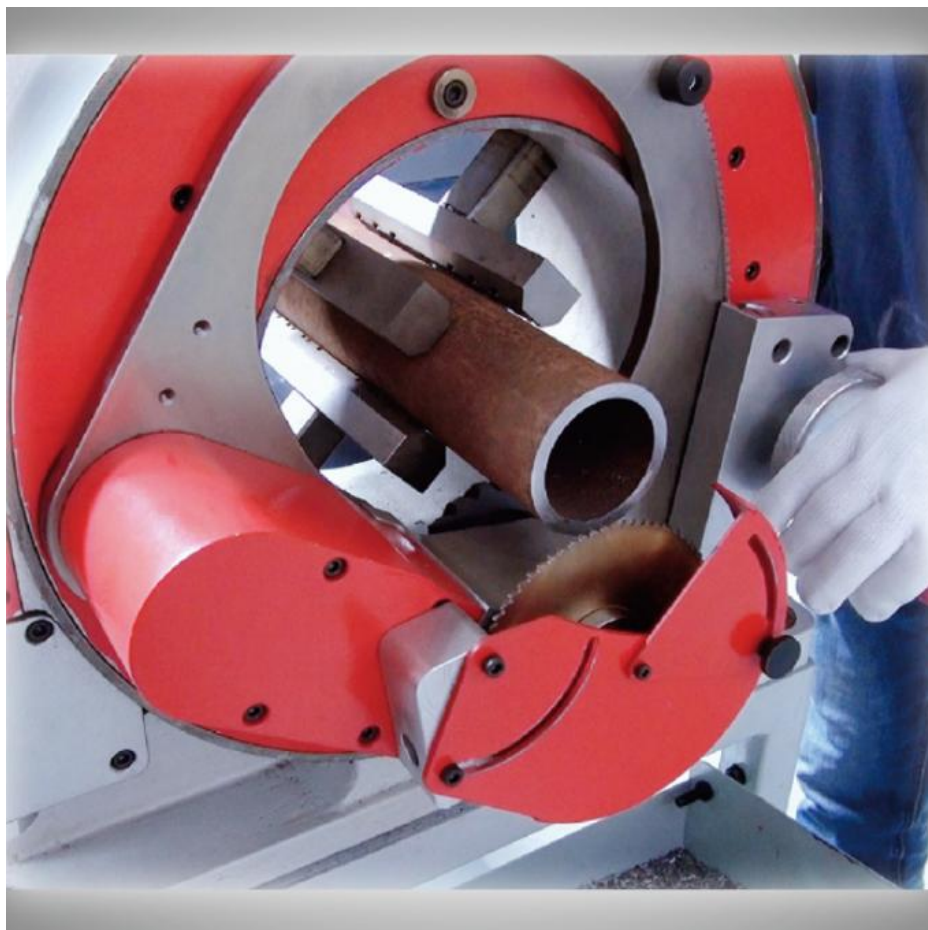
### More Images



## Product Description

Pipe cutting/bevelling machine is a professional equipment for cutting/bevelling the workpiece before welding in order to ensure the welding quality in the welding production process. Pipe cutting/bevelling machine solves the disadvantages of flame cutting, grinder grinding and other work processes, such as the angle is not standardised, the processing surface is rough, the work of the noise and so on, and reduces the operating costs, has the advantages of easy to operate, processing angle is accurate, and the processing surface has a high degree of smoothness. Pipe cutting/bevelling machine is a kind of important auxiliary equipment which is widely used in the fields of ships, pressure vessels, heat exchangers and pipelines to carry out welding production work

Optional Bevel Angle	30°,32°,35°,37.5°,45°
Dimension(DxLxH)	727x554x550mm
Weight	165kg







**HUAHENG** Kunshan Huaheng Welding Co., Ltd.

+86 13962665533

huaheng1995@gmail.com

huahengautomation.com

No.99 WuSongJiang Road, KunShan, JiangSu, PR.China PC.215334