

2-6 Axes CNC Profile Cutting System 50-1500mm Cutting Diameter

Our Product Introduction

Basic Information



Product Specification

- Control Axis: 2-6 Axes
- Cutting Diameter: 50-1500mm
- Cutting Length: 2000-18000mm
- Cutting Thickness: 5-60mm
- Payload: 8000kg
- Cutting Torch: 1 Set Of Plasma/oxyfuel Torch Switching
- Cutting Speed: 80-2500mm/min
- Idling Speed: 0-10000mm/min
- Cutting Method: Plasma,oxyfuel
- Beveling Type: V/Y \pm 45°(Plasma) \pm 60°(Oxyfuel)
- Bevel Specification: AWS/fixed-angle/variable-angle
- Highlight: **6 Axes CNC Profile Cutting System,
2 Axes CNC Profile Cutting System,
50-1500mm Diameter CNC Profile Cutting System**

Product Description

Cutting method: oxyfuel or plasma.

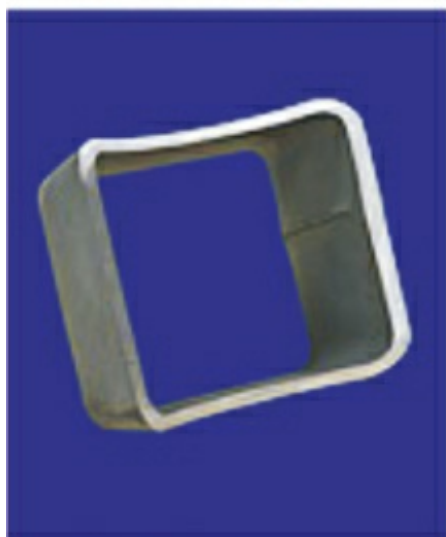
Automatic program and cutting of hole, pipe end and elbow profile cutting.

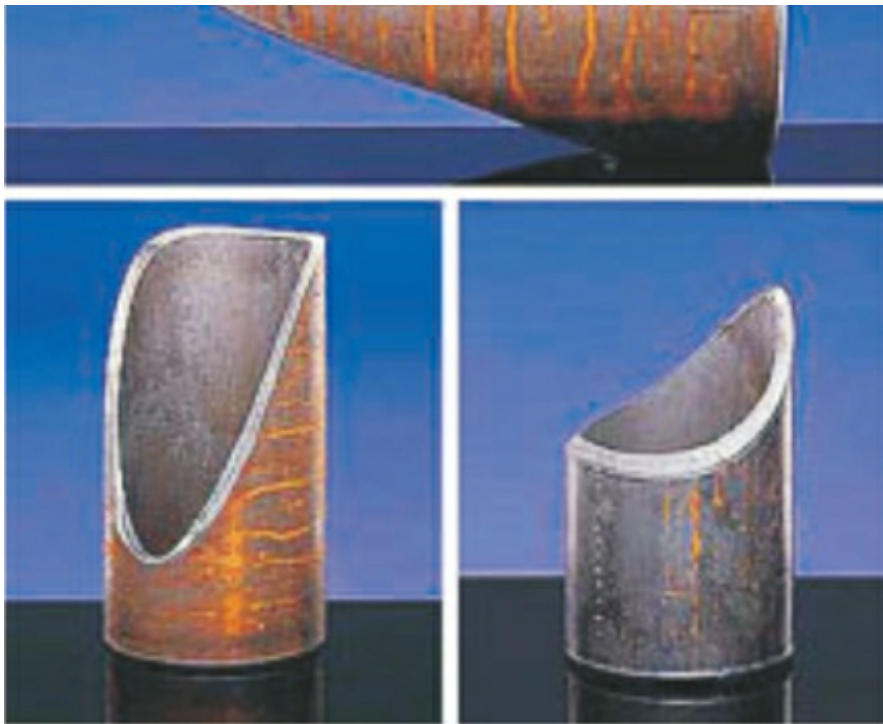
Suit for edge beveling preparation process.

Widely used for pipe fitting cutting in construction, chemical, shipyard, construction machinery, metallurgy, power plant, offshore industry.

Easy to cut these kind, no need for calculating or programming, just input the intersection line, hole and bevel requirement.







HUAHENG Kunshan Huaheng Welding Co., Ltd.

+86 13962665533

huaheng1995@gmail.com

huahengautomation.com

No.99 WuSongJiang Road, KunShan, JiangSu, PR.China PC.215334